

\$89,900 - 25 Hillgreen Drive, Rural

MLS® #A2256067

\$89,900

0 Bedroom, 0.00 Bathroom,
Land on 5.01 Acres

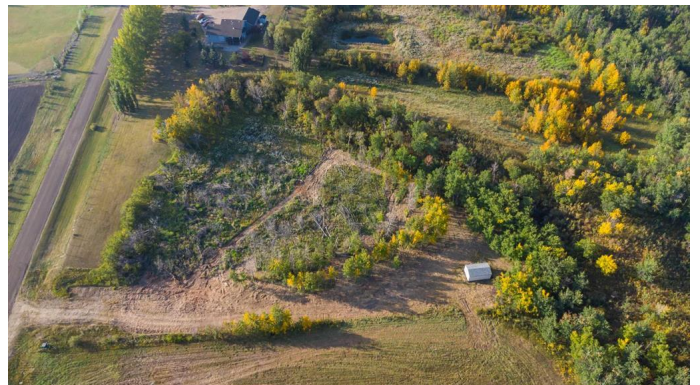
NONE, Rural, Saskatchewan

Welcome to 25 Hillgreen Drive, a picturesque 5 acre parcel nestled in the tranquil countryside. If you're seeking a serene environment with breathtaking views and abundant greenery, this property will capture your heart.

As you arrive, the peaceful natural landscape sets the tone for endless possibilities. With ample space to design and construct your dream home, you can envision anything from a sprawling estate to a cozy countryside retreat.

The property includes a 10x20 shed, perfect for storage or starting your outdoor projects. Plus, being just minutes from Lloydminster, you'll enjoy the best of both worlds—quiet country living with quick access to city amenities and attractions.

Located in the Lloydminster School subdivision, this is an ideal setting for families ready to build their future.



Essential Information

MLS® #	A2256067
Price	\$89,900
Bathrooms	0.00
Acres	5.01
Type	Land
Sub-Type	Residential Land

Status Active

Community Information

Address 25 Hillgreen Drive
Subdivision NONE
City Rural
County Saskatchewan
Province Saskatchewan
Postal Code S9V 0Y6

Exterior

Lot Description Irregular Lot

Additional Information

Date Listed September 15th, 2025
Zoning ACR

Listing Details

Listing Office RE/MAX OF LLOYDMINSTER

Data is supplied by Pillar 9â„¢ MLSÂ® System. Pillar 9â„¢ is the owner of the copyright in its MLSÂ® System. Data is deemed reliable but is not guaranteed accurate by Pillar 9â„¢. The trademarks MLSÂ®, Multiple Listing ServiceÂ® and the associated logos are owned by The Canadian Real Estate Association (CREA) and identify the quality of services provided by real estate professionals who are members of CREA. Used under license.