

# \$115,000 - 8810 59 Avenue, Grande Prairie

MLS® #A2256342

**\$115,000**

0 Bedroom, 0.00 Bathroom,  
Land on 0.19 Acres

Summerside., Grande Prairie, Alberta

Build Your New Home in Southwynd Estates!  
Now availableâ€”a fully serviced residential lot,  
ready for construction! Located in the  
desirable Southwynd Estates community on  
the southeast corner of Grande Prairie, this  
large corner lot offers potential to capture  
views of the pond to the south and never have  
neighbours on three sides! Don't miss your  
chance to make it yours! Price does not  
include GST.

## Essential Information

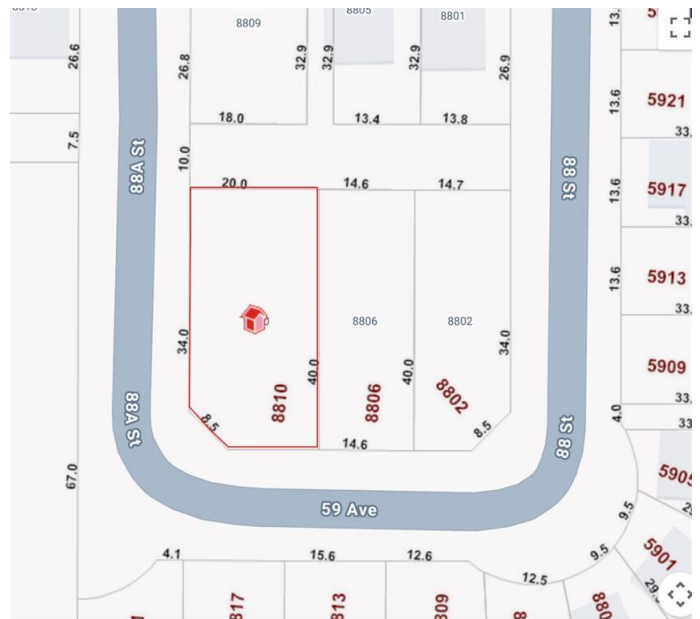
MLS® #	A2256342
Price	\$115,000
Bathrooms	0.00
Acres	0.19
Type	Land
Sub-Type	Residential Land
Status	Active

## Community Information

Address	8810 59 Avenue
Subdivision	Summerside.
City	Grande Prairie
County	Grande Prairie
Province	Alberta
Postal Code	T8W 0J9

## Additional Information

Date Listed	September 16th, 2025
-------------	----------------------



Zoning

RS

## **Listing Details**

Listing Office

Grassroots Realty Group Ltd.

Data is supplied by Pillar 9â„¢ MLS® System. Pillar 9â„¢ is the owner of the copyright in its MLS® System. Data is deemed reliable but is not guaranteed accurate by Pillar 9â„¢. The trademarks MLS®, Multiple Listing Service® and the associated logos are owned by The Canadian Real Estate Association (CREA) and identify the quality of services provided by real estate professionals who are members of CREA. Used under license.