

\$424,900 - 11482 69 Avenue, Grande Prairie

MLS® #A2256631

\$424,900

3 Bedroom, 3.00 Bathroom, 1,921 sqft

Residential on 0.11 Acres

Pinnacle Ridge., Grande Prairie, Alberta

Beautiful home in Pinnacle! This immaculate, fully finished property sits on a corner lot with RV parking and offers 3 bedrooms, 3 bathrooms, and plenty of functional living space.

The upper level features 2 bedrooms and 2 bathrooms, including a spacious primary suite with his-and-her closets and a private ensuite. The main floor offers a bright living room and an open kitchen with island, corner pantry, and dining area with access to a potential 3-season room, leading out to a maintenance-free deck complete with gas hookup. The 3rd level walkout boasts a cozy family room with corner fireplace, an additional bedroom, and a full bathroom. On the 4th level, youâ€™ll find another family room (or potential 4th bedroom), laundry, and storage space. Laminate and tile flooring run throughout the home. The attached garage is fully finished, heated, and includes hot/cold water, built-in storage, and a pet grooming room with a custom tiled dog bath. This stunning home wonâ€™t last long and is available for immediate possession!

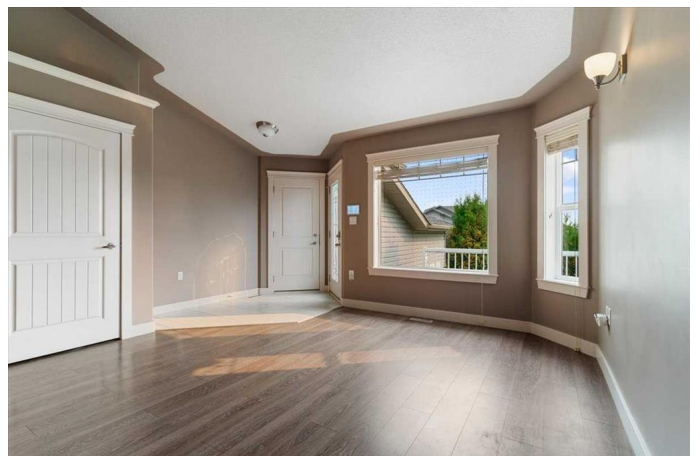
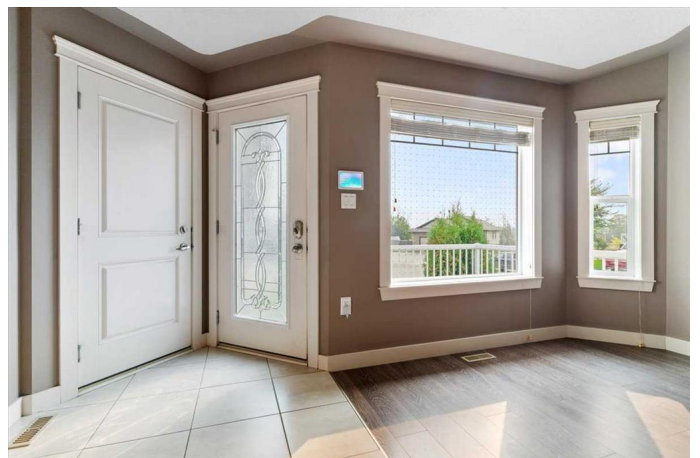
Built in 2011

Essential Information

MLS® # A2256631

Price \$424,900

Bedrooms 3



Bathrooms	3.00
Full Baths	3
Square Footage	1,921
Acres	0.11
Year Built	2011
Type	Residential
Sub-Type	Detached
Style	4 Level Split
Status	Active

Community Information

Address	11482 69 Avenue
Subdivision	Pinnacle Ridge.
City	Grande Prairie
County	Grande Prairie
Province	Alberta
Postal Code	T8W0E7

Amenities

Parking Spaces	6
Parking	Double Garage Attached
# of Garages	2

Interior

Interior Features	Open Floorplan
Appliances	Dishwasher, Electric Stove, Microwave Hood Fan, Refrigerator, Washer/Dryer
Heating	Forced Air
Cooling	None
Fireplace	Yes
# of Fireplaces	1
Fireplaces	Gas
Has Basement	Yes
Basement	Finished, Full

Exterior

Exterior Features	Other
Lot Description	Back Yard, Corner Lot
Roof	Asphalt Shingle

Construction	Vinyl Siding
Foundation	Poured Concrete

Additional Information

Date Listed	September 13th, 2025
Zoning	RS

Listing Details

Listing Office	Sutton Group Grande Prairie Professionals
----------------	---

Data is supplied by Pillar 9â„¢ MLS® System. Pillar 9â„¢ is the owner of the copyright in its MLS® System. Data is deemed reliable but is not guaranteed accurate by Pillar 9â„¢. The trademarks MLS®, Multiple Listing Service® and the associated logos are owned by The Canadian Real Estate Association (CREA) and identify the quality of services provided by real estate professionals who are members of CREA. Used under license.