

# \$369,900 - 377 Lynx Crescent N, Lethbridge

MLS® #A2256875

**\$369,900**

4 Bedroom, 2.00 Bathroom, 831 sqft

Residential on 0.06 Acres

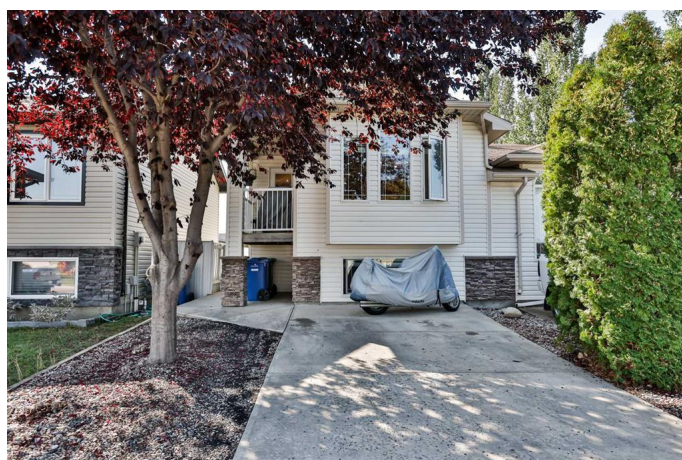
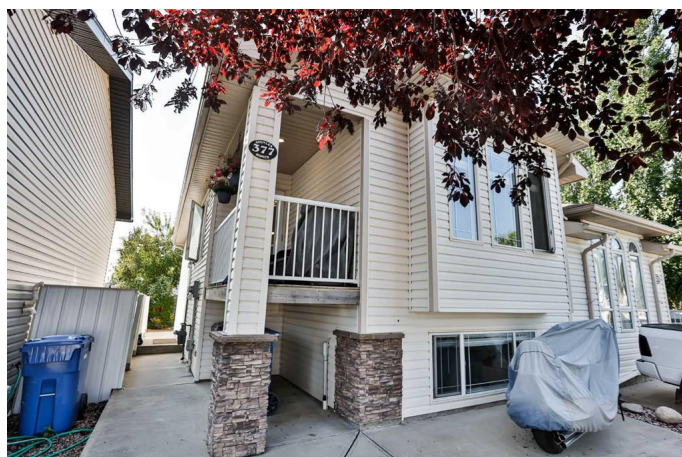
Uplands, Lethbridge, Alberta

Charming and well-maintained 1/2 duplex with ample parking and low maintenance yard! This immaculate home is filled with natural light, both upstairs and downstairs, creating a bright and welcoming atmosphere. The dining nook opens to a charming patio area, perfect for relaxing. Recently updated with new vinyl plank flooring and paint upstairs, this home is move-in ready. Enjoy the convenience of parking options both in the front and back of the property. The backyard features a private patio surrounded by mature trees and shrubs, offering a serene retreat with absolutely no grass to cut. This low-maintenance yard is ideal for those seeking a hassle-free lifestyle. With 4 bedrooms and 2 full bathrooms, this home is perfect for families or those looking for extra space. A great start for the new homeowner, this property combines practicality with charm, making it a must-see!

Built in 2005

## Essential Information

MLS® #	A2256875
Price	\$369,900
Bedrooms	4
Bathrooms	2.00
Full Baths	2
Square Footage	831
Acres	0.06
Year Built	2005



Type	Residential
Sub-Type	Semi Detached
Style	Side by Side, Bi-Level
Status	Active

### Community Information

Address	377 Lynx Crescent N
Subdivision	Uplands
City	Lethbridge
County	Lethbridge
Province	Alberta
Postal Code	T1H 6X7

### Amenities

Parking Spaces	3
Parking	Off Street, Parking Pad, RV Access/Parking

### Interior

Interior Features	Open Floorplan, Storage, Sump Pump(s), Vaulted Ceiling(s), Vinyl Windows
Appliances	See Remarks
Heating	Forced Air
Cooling	None
Has Basement	Yes
Basement	Finished, Full

### Exterior

Exterior Features	None
Lot Description	Back Lane, Cul-De-Sac, Interior Lot, Low Maintenance Landscape
Roof	Asphalt Shingle
Construction	Vinyl Siding, Wood Frame
Foundation	Poured Concrete

### Additional Information

Date Listed	September 13th, 2025
Zoning	R-L

### Listing Details

Listing Office	RE/MAX REAL ESTATE - LETHBRIDGE
----------------	---------------------------------

Data is supplied by Pillar 9â„¢ MLS® System. Pillar 9â„¢ is the owner of the copyright in its MLS® System. Data is deemed reliable but is not guaranteed accurate by Pillar 9â„¢. The trademarks MLS®, Multiple Listing Service® and the associated logos are owned by The Canadian Real Estate Association (CREA) and identify the quality of services provided by real estate professionals who are members of CREA. Used under license.