

\$899,900 - 82060 Range Rd 191, Rural Lethbridge County

MLS® #A2257343

\$899,900

5 Bedroom, 4.00 Bathroom, 2,644 sqft
Residential on 1.05 Acres

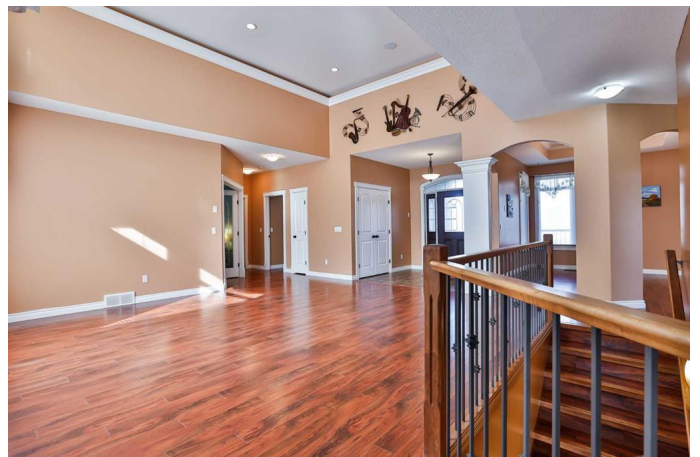
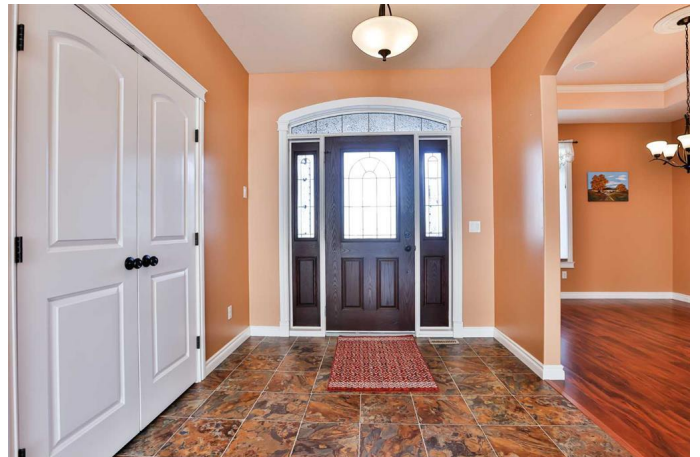
NONE, Rural Lethbridge County, Alberta

This thoughtfully designed, custom-built bungalow sits on a private acreage and offers over 5,000 sq. ft. of developed living space, including more than 2,600 sq. ft. on the main level. With 5 bedrooms and 3.5 bathrooms, itâ€™s tailored for comfortable main-floor living and flexibility for the whole family.

The main level features vaulted ceilings, an expansive living and dining area, and a chefâ€™s kitchen with quality finishes. The primary suite includes a 6-piece ensuite with a double tiled shower, jetted tub, and direct access to the covered 8-person hot tub. Two additional bedrooms share a Jack & Jill bathroom, and a separate office provides a private workspace or client meeting area.

The fully developed basement, warmed with in-floor heating, offers a large games/family room ready for a pool table, a roughed-in bar wall, two more bedrooms, a full bathroom, and direct access to a workshop from the garage.

Outdoors, enjoy a partially covered deck with BBQ included, a patio with firepit, and an oversized heated shop with 220V power. This property is turn-key, with skid steer, ride-on zero-turn lawnmower, and water tanks included. Event photos are also available to highlight the lifestyle this acreage offers.



Located about 25 minutes from Lethbridge and close to Indian Hills Golf Course, this acreage combines space, comfort, and thoughtful details throughout. Be sure to view the virtual tour and photos – they showcase the many opportunities this acreage provides.

Built in 2010

Essential Information

MLS® #	A2257343
Price	\$899,900
Bedrooms	5
Bathrooms	4.00
Full Baths	3
Half Baths	1
Square Footage	2,644
Acres	1.05
Year Built	2010
Type	Residential
Sub-Type	Detached
Style	Acreage with Residence, Bungalow
Status	Active

Community Information

Address	82060 Range Rd 191
Subdivision	NONE
City	Rural Lethbridge County
County	Lethbridge County
Province	Alberta
Postal Code	T0K0R0

Amenities

Parking Spaces	2
Parking	Double Garage Detached, Garage Door Opener, RV Access/Parking, Gravel Driveway, Oversized
# of Garages	2

Interior

Interior Features	Ceiling Fan(s), Double Vanity, Kitchen Island, Separate Entrance, Stone Counters, Storage, Vinyl Windows, Walk-In Closet(s), Tray Ceiling(s)
Appliances	Built-In Gas Range, Central Air Conditioner, Dishwasher, Garage Control(s), Microwave, Range Hood, Refrigerator, Tankless Water Heater, Washer/Dryer, Window Coverings, Gas Oven
Heating	Boiler, Central, In Floor, Solar
Cooling	Central Air
Fireplace	Yes
# of Fireplaces	2
Fireplaces	Gas, Living Room, Master Bedroom
Has Basement	Yes
Basement	Exterior Entry, Finished, Full

Exterior

Exterior Features	BBQ gas line, Fire Pit, Garden, Lighting, Private Entrance, Private Yard, Storage, Barbecue, Gray Water System
Lot Description	Front Yard, Landscaped, No Neighbours Behind, Private, Treed, Underground Sprinklers, Views, Close to Clubhouse, Many Trees, Secluded
Roof	Asphalt Shingle
Construction	Concrete, Stone, Vinyl Siding, Wood Frame
Foundation	Poured Concrete

Additional Information

Date Listed	September 16th, 2025
Zoning	Country Residential

Listing Details

Listing Office	RE/MAX REAL ESTATE - LETHBRIDGE
----------------	---------------------------------

Data is supplied by Pillar 9â„¢ MLS® System. Pillar 9â„¢ is the owner of the copyright in its MLS® System. Data is deemed reliable but is not guaranteed accurate by Pillar 9â„¢. The trademarks MLS®, Multiple Listing Service® and the associated logos are owned by The Canadian Real Estate Association (CREA) and identify the quality of services provided by real estate professionals who are members of CREA. Used under license.