

# \$1,350,000 - 5801 Lakeshore Drive, Sylvan Lake

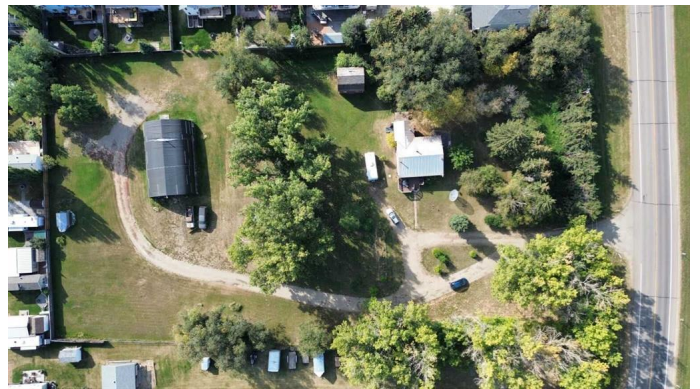
MLS® #A2258600

**\$1,350,000**

0 Bedroom, 0.00 Bathroom,  
Land on 2.46 Acres

NONE, Sylvan Lake, Alberta

Prime multi-family development opportunity on Lakeshore Drive in Sylvan Lake! This 2.46-acre parcel is one of the last large development sites along the lakefront corridor and is ideally suited for future higher-density residential under the Town's Urban Neighbourhood policy. The property is currently zoned Future Designation, requiring an Outline Plan and rezoning, but its location and size make it a standout candidate for townhomes, stacked townhouses, or low-rise multi-family. Surrounded by established neighbourhoods and within walking distance to the lake, schools, and amenities, this site offers unmatched potential for a signature residential project. Existing improvements include an older bungalow, barn, and quonset, with value placed on the land for redevelopment. A rare chance to secure premium infill land in one of Central Alberta's fastest-growing communities.



## Essential Information

MLS® #	A2258600
Price	\$1,350,000
Bathrooms	0.00
Acres	2.46
Type	Land
Sub-Type	Commercial Land
Status	Active

## Community Information

Address	5801 Lakeshore Drive
Subdivision	NONE
City	Sylvan Lake
County	Red Deer County
Province	Alberta
Postal Code	T4S 1T9

## Additional Information

Date Listed	September 18th, 2025
Days on Market	47
Zoning	FD

## Listing Details

Listing Office	eXp Realty
----------------	------------

Data is supplied by Pillar 9â„¢ MLSÂ® System. Pillar 9â„¢ is the owner of the copyright in its MLSÂ® System. Data is deemed reliable but is not guaranteed accurate by Pillar 9â„¢. The trademarks MLSÂ®, Multiple Listing ServiceÂ® and the associated logos are owned by The Canadian Real Estate Association (CREA) and identify the quality of services provided by real estate professionals who are members of CREA. Used under license.