

\$610,000 - 210 Evansmeade Point Nw, Calgary

MLS® #A2268431

\$610,000

3 Bedroom, 3.00 Bathroom, 1,533 sqft
Residential on 0.08 Acres

Evanston, Calgary, Alberta

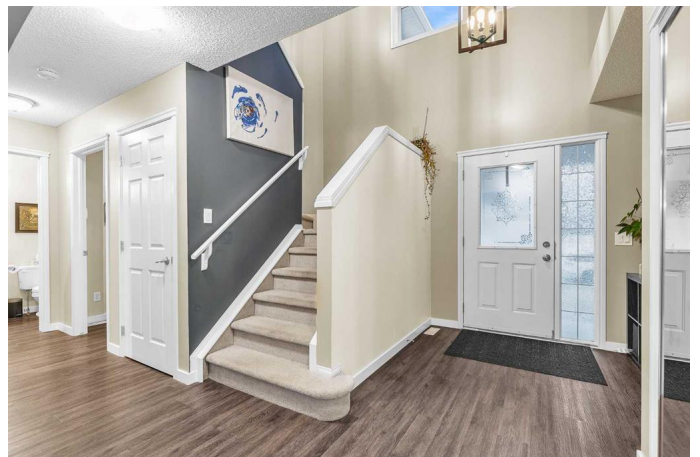
Welcome to Your Family's Dream Home in Evanston

Tucked away in a peaceful cul-de-sac, this immaculate duplex offers over 2,100 sqft of beautifully developed living space—perfect for growing families.

Step inside to a vaulted entryway that creates an airy, grand welcome. Natural light pours in, setting the tone for the bright and inviting main floor, where spacious living and dining areas flow seamlessly into the backyard—ideal for entertaining or letting the kids play freely. The kitchen features quartz countertops, a stylish new backsplash, all new appliances and hood fan (with the dishwasher being original), and upgraded lighting that adds a modern touch. A convenient guest bathroom with an upgraded vanity and easy access to the backyard complete the main level.

Upstairs, the sun-filled primary suite offers a walk-in closet, en suite, and a private balcony—the only duplex on the street with this feature. Two additional generously sized bedrooms provide plenty of space for family or guests.

The basement boasts a large rec room with durable LVP flooring, perfect for playtime, movie nights, or a home gym. Recent upgrades include a new roof and siding in 2025, and a washer and dryer upgraded in 2023.



Located in one of Calgary's most desirable family communities, Evanston is known for its excellent schools, abundant green spaces, nearby shopping, and quick access to major roads. This home is within walking distance to local schools, parks, scenic walking paths, and expansive green spaces—ideal for families who value convenience and outdoor living.

Don't miss out—schedule your showing today and see why this home stands out from the rest!

Built in 2003

Essential Information

MLS® #	A2268431
Price	\$610,000
Bedrooms	3
Bathrooms	3.00
Full Baths	2
Half Baths	1
Square Footage	1,533
Acres	0.08
Year Built	2003
Type	Residential
Sub-Type	Semi Detached
Style	2 Storey, Side by Side
Status	Active

Community Information

Address	210 Evansmeade Point Nw
Subdivision	Evanston
City	Calgary
County	Calgary
Province	Alberta
Postal Code	T3P 1B8

Amenities

Parking Spaces	4
Parking	Double Garage Attached
# of Garages	2

Interior

Interior Features	See Remarks
Appliances	Dishwasher, Electric Oven, Electric Range, Garage Control(s), Microwave, Refrigerator, Washer/Dryer, Window Coverings
Heating	Forced Air
Cooling	None
Has Basement	Yes
Basement	Full

Exterior

Exterior Features	Balcony, Private Yard
Lot Description	Back Yard, Lawn, Treed
Roof	Asphalt Shingle
Construction	Stone, Vinyl Siding
Foundation	Poured Concrete

Additional Information

Date Listed	November 7th, 2025
Days on Market	1
Zoning	R-G

Listing Details

Listing Office	First Place Realty
----------------	--------------------

Data is supplied by Pillar 9â„¢ MLSÂ® System. Pillar 9â„¢ is the owner of the copyright in its MLSÂ® System. Data is deemed reliable but is not guaranteed accurate by Pillar 9â„¢. The trademarks MLSÂ®, Multiple Listing ServiceÂ® and the associated logos are owned by The Canadian Real Estate Association (CREA) and identify the quality of services provided by real estate professionals who are members of CREA. Used under license.